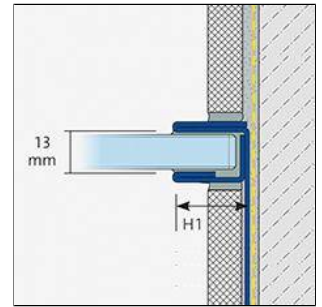
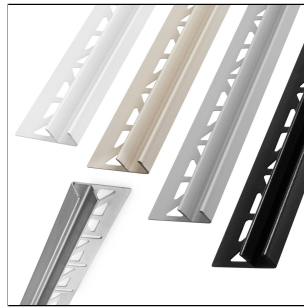
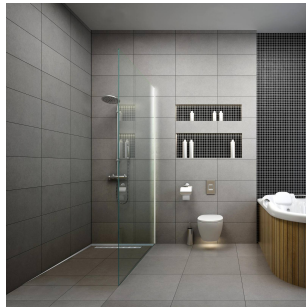




SHOWER-GK GLAS WALL

Profile For Glass Mounting On The Wall



ACCESSORIES

SHOWER-GK GLASS installation kit

PROPERTIES

For the installation of ESG glass shower partitions with a thickness of 8–12 mm in SHOWER-GK glass mounting profiles Wall and Floor

MATERIAL

Stainless steel (304) is particularly suitable for applications subject to high mechanical stress and for applications with particularly high requirements for cleanliness, hygiene and chemical resistance. Contact with products containing hydrochloric acid should be avoided.

No tools made of unalloyed steel may be used for processing. Open cut edges are not rust-resistant. If necessary, separate rust protection must be applied.

Even with stainless steel, flash rust may occur depending on the environmental conditions and should be removed immediately. The suitability of the material with regard to mechanical and chemical resistance must always be checked in individual cases. The suitability for mechanical and chemical stress must always be checked on a case-by-case basis.

CARE

Stainless steel V2A/304 does not require any special care. If necessary, it can be cleaned simply with clear, clean water and a few drops of washing-up liquid. Then wipe dry.

Avoid using acidic, alkaline and abrasive cleaning agents. Flash rust can be removed with commercially available polishes suitable for stainless steel.

PROCESSING

1. Apply tile adhesive with a notched trowel.
2. Press the profile into the adhesive bed and align it.
3. Fill the fixing flange completely with adhesive.
4. Press the tiles firmly into place and align them so that they are flush with the top edge of the profile. Lay the tiles so that they are completely covered.
5. Leave a 1-2 mm joint between the profile and the tiles.
6. Fill the space between the tiles and the profile completely with joint mortar.

Please note: For technical reasons, tolerances in color effects of the materials and print are possible. All information is based on the best of our knowledge and belief. No guarantee can be derived from this. We reserve the right to any technical changes if they are in the interest of progress or if they are production-related.



Use a slow-running angle grinder with a suitable, clean cutting disc to cut the profiles. Prevent cutting sparks from settling on the profile surfaces.

Protect visible surfaces from contact with tile adhesive or grout and clean immediately with a cloth and clear water if necessary. Then rub dry.

The generally accepted rules of technology must be observed.

The generally accepted rules of technology and tiling must be observed. Suitability for use with mechanical and chemical resistance must always be checked in each individual case.

TECHNICAL DIMENSIONS AND PRODUCT VARIANTS

Material	[Stainless Steel (304)]
Surface	[tactile coated], [brushed]
Colour	natural, concrete grey (RAL 0006500), white matt (RAL 9003), black matt (RAL 9005), sand (RAL 0808005)
Length	220 cm
Height	19 mm
Width mm	13 mm
height 2	20

PRODUCT VARIANTS

Ident	Height	Surface	Colour	Length
GKGW 190-SF/220	19 mm	brushed	natural	220 cm
GKGW 190-11/220	19 mm	tactile coated	black matt (RAL 9005)	220 cm
GKGW 190-65/220	19 mm	tactile coated	concrete grey (RAL 0006500)	220 cm
GKGW 190-80/220	19 mm	tactile coated	sand (RAL 0808005)	220 cm
GKGW 190-12/220	19 mm	tactile coated	white matt (RAL 9003)	220 cm

Please note: For technical reasons, tolerances in color effects of the materials and print are possible. All information is based on the best of our knowledge and belief. No guarantee can be derived from this. We reserve the right to any technical changes if they are in the interest of progress or if they are production-related.